

<http://www.allmandboats.com/Water-Taxi.pdf>

email [allmandboats@gmail.com](mailto:allmandboats@gmail.com) or call 305-396-3727 Add up your options total then email or call for the latest discounts and special offers on this model.

**20 Passenger 880 Hard Top Boat,**

US\$22600/boat.1xboat Includes Global Shipping.

Length:8.8m,width:2.64m.High:2.3m.power:1x200hp/2x115hp/2x150hp/2x140hp

Seats:21.

**Standard equipments:**

18xfiberglass seats and stern seat.

Nav lights,

S/S rails at stern,

S/S rails at TOP,

Anchor storage at bow,

Cabin (HardTOP) with windscreen and side window.

Bilge pump,

1xElectrical Water wipe,

1xElectrical bugle.

**Optional:**

outboard engine or inboard engine

Steering system mechanical for one engine:US\$200.

Aluminium fuel tank:200L:US\$445.

Aluminum fold door:US\$700.(with door the seats will remove 6pcs)

18xFold seat instead of fiberglass seats:US\$2100.

Steering system:hydraulic for one engine:US\$750.

Hydraulic steering system for twin engines with connection:US\$950.

Remote control system for twin engines (Yamaha):US\$514.

2xBattery and switch.:US\$220.

Side windscreen electrical water wipe:US\$150.

Twin axle trailer with brakes:US\$1628/pc.

Yamaha outboard engine 4 stroke 150HP:US\$14657/pc. 200HP:US\$17400/pc, 115hp:US\$11220Suzuki

4 stroke 140HP:US\$11580/pc

### **12 Passenger 760 Hard Top Boat,**

US\$18,980/boat.1xboat Includes Global Shipping.

Length:7.6m,width:2.64m.High:2.3m.power:1x150hp/1x200hp/2x115hp.

Seats:13. (9xsignal GRP seat,1xstern seat for 4 persons)

#### **Standard equipments:**

13xfiberglass seats and stern seat.

Nav lights,

S/S rails at stern,

S/S rails at TOP,

Anchor storage at bow,

Cabin (HardTOP) with windscreen and side window.

Bilge pump (1000L/min),

1xElectrical Water wipe,

1xElectrical bugle.

#### **Optional:**

outboard engine or inboard engine

Steering system mechanical for one engine:US\$200.

Aluminium fuel tank:200L:US\$445.

Aluminum fold door:US\$700.(with door the seats will be removed 3pcs)

9xFold seat instead of fiberglass seats:US\$1053.(US\$117/pc)

Steering system:hydraulic for one engine:US\$750.

Hydraulic steering system for twin engines with connection:US\$950.

Remote control system for twin engines (Yamaha):US\$514.

2xBattery and switch.:US\$220.

Side windscreen electrical water wipe:US\$150.

Twin axle trailer with brakes:US\$1586/pc.

Yamaha outboard engine 4 stroke 150HP:US\$14657/pc. 200HP:US\$17400/pc, 115hp:US\$11220

Suzuki 4 stroke 140HP:US\$11580/pc

760/24' 12 passenger below:



880/29' 20 passenger below



Standard fiberglass seats below (any color choice)



Optional upgrade folding seats





The rear below

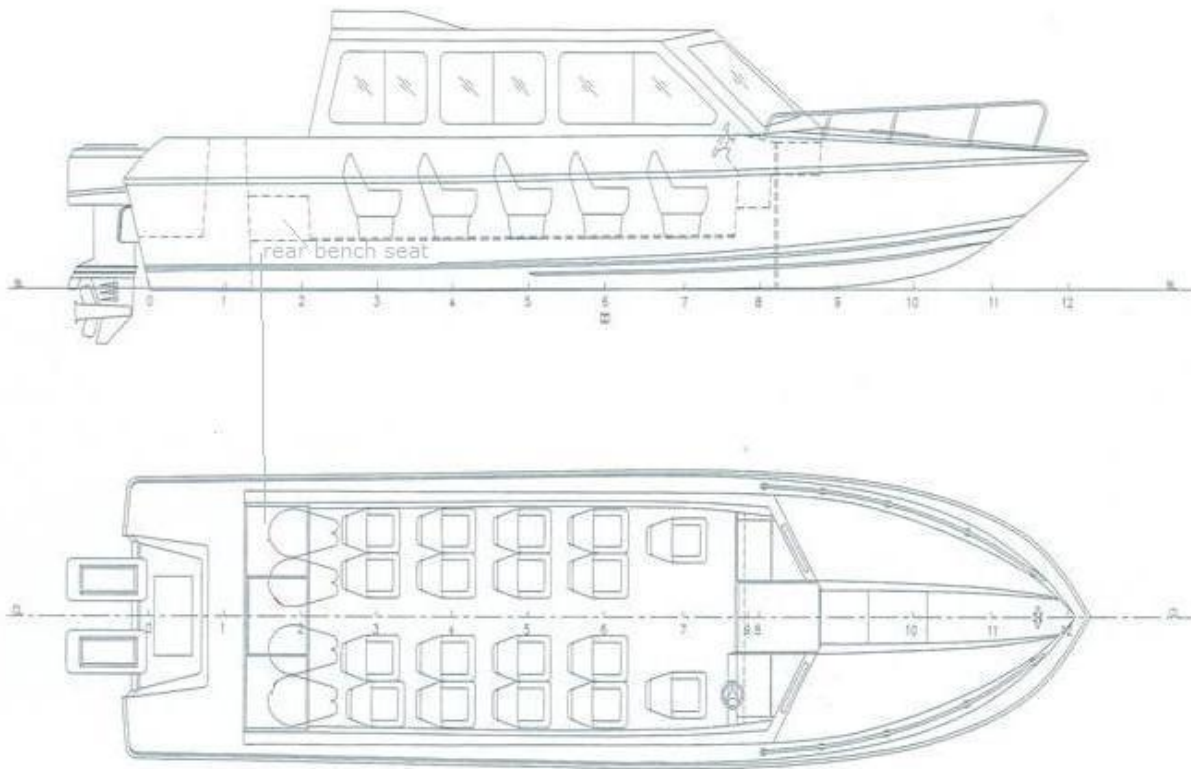


Optional sliding doors





Drawing 880/29'



LRNGTH 8.81  
WATER LINE 7.893  
BEAM 2.64  
DRAFT 1.19

PASSENGERS 21 +  
DRIVER

Side View 760/24'



Dashboard view



Walk through dashboard option 880/29

